



InfinitiKloud

USER GUIDE

A User Guide for INFINITIKLOUD DESKTOP

1. Introduction	3
2. Running the IK app	3
3. Keep the app up to date	4
4. User Account	5
4.1 Sign In	
4.2 Sign out	
5. Home	5
5.1 Backup and Restore with InfinitiKloud Storage	
5.2 Backup and Restore using Other Devices	
5.3 Backup and Restore with Computer Storage	

B User Guide for INFINITIKLOUD MOBILE

1. Install InfinitiKloud	13
1.2. Mobile Devices	
1.2. PC And Mac Devices	
2. Login – Register	13
3. Connect Devices To Your Phone	14
3.1. InfinitiKloud Charge	
3.2. InfinitiKloud SD Or Charge	
3.3. InfinitiKloud Wireless	
4. Devices Management	15
4.1. Storage Listing	15
4.2. Setup Connection	15
4.3. Available Actions	16
4.4. Manage Files Functions	16
4.5. Supported Backup Places	18
4.6. Back Up	18
A. To Internal Storage	
B. To InfinitiKloud Storage	
C. To InfinitiKloud Wireless Storage	
D. To Other Devices	
4.7. Restore Files	22
A. From Internal Storage	
B. From InfinitiKloud Storage	
C. From InfinitiKloud Wireless Storage	
D. From Other Devices	



InfinitiKloud

IMPORTANT SAFETY INFORMATION

CAUTION:

- All of the data, including the built-in software on the drive, will be deleted when the drive is formatted.
- Do not use device if there is obvious damage.

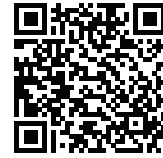
WARNING:

- Choking hazard. This device is not a toy. Keep away from children.

DOWNLOAD THE INFINITIKLOUD APP

Use our **Google Play™** or **App Store®** mobile app to back up your mobile devices with one tap. There are 2 ways to download the app:

1. On your Android™/iOS™ devices, open Google Play™ or App Store® and search “**Infiniti Kloud**”. Then download the app.
2. Scan the QR code.



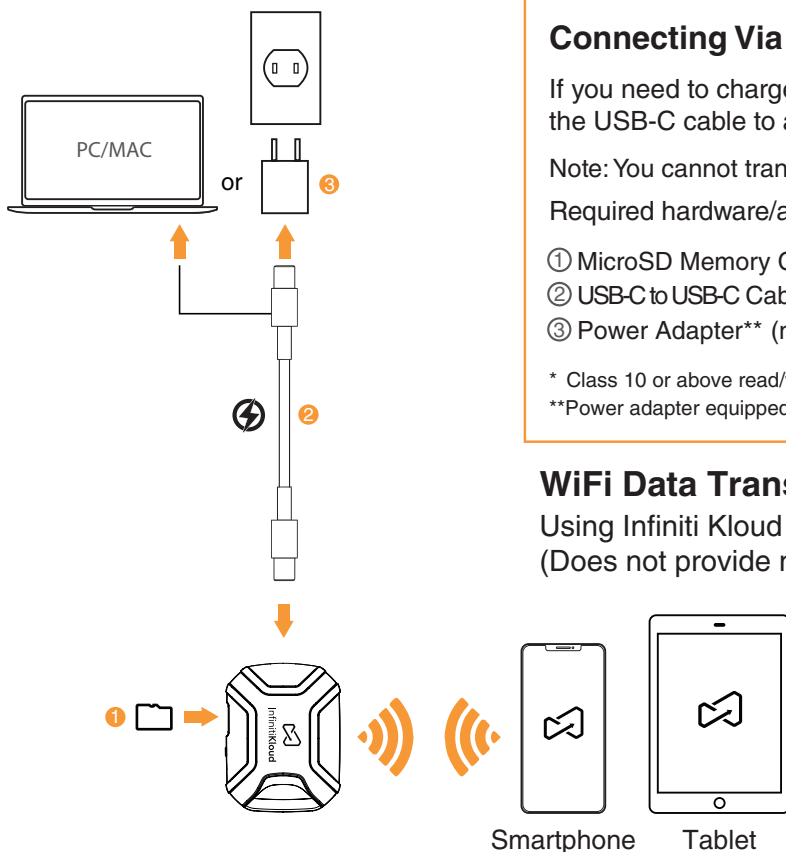
For iOS™



For Android™

1 How to Use

InfinitiKloud Wireless is compatible with Android™/iOS™ devices and PC/Mac with the USB-C cable provided. For mobile devices, a download of Infiniti Kloud in the App Store® or Google Play™ is required. It can be used in the scenario below:



Connecting Via WiFi

If you need to charge the device while connected via WiFi, you can plug the USB-C cable to a power adapter or your PC/Mac.

Note: You cannot transfer data through USB-C at the same time.

Required hardware/accessories

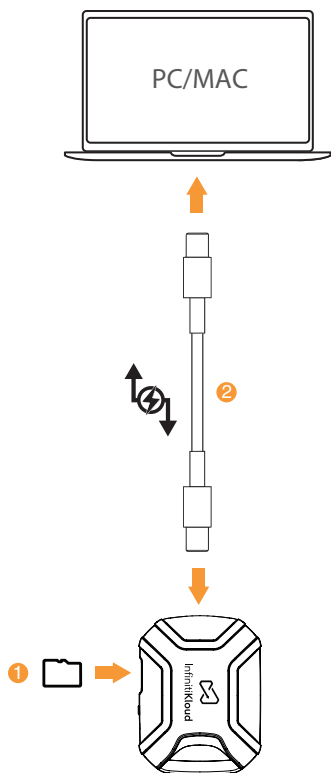
- ① MicroSD Memory Card* (not included)
- ② USB-C to USB-C Cable (included)
- ③ Power Adapter** (not included)

* Class 10 or above read/write speed

**Power adapter equipped with USB-C port (5V/2A)

WiFi Data Transfer

Using Infiniti Kloud App (iOS™ & Android™)
(Does not provide network data)



Connecting Using a USB Cable

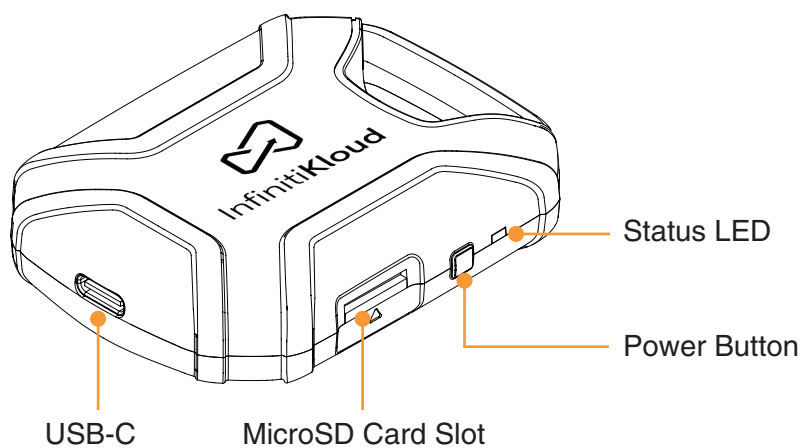
Required hardware/accessories

- ① MicroSD Memory Card* (not included)
- ② USB-C to USB-C cable (included)

* Class 10 or above read/write speed

2 Important Instructions Before Use

1. Device should only be used for the intended purpose as outlined in the instructions.
2. Do not expose device to moisture or extreme heat.
3. Do not submerge device underwater. Do not expose to liquid, smoke, or steam.



3 How to Use the Product Wirelessly

1. Insert your MicroSD card into the MicroSD card slot of the device.
2. Turn on the device (Press and hold the power button for 3 seconds).
3. Open the phone/tablet settings > Enable WiFi > Search for the WiFi called “**InfinitiKloud Wireless**”.
4. Upon successful WiFi connection, the indicator light will be solid blue. Open the InfinitiKloud app and you're ready to go.

HOW TO USE THE PRODUCT WITH PC/MAC (WIRED)

Connect the device to your PC/Mac using the data cable. When detected, open the folder and click to run the InfinitiKloud App to get started. (When connected to PC/Mac, the device cannot be accessed via WiFi).

HOW TO CHARGE THE PRODUCT

When the device needs charging, connect to a power source. It takes about 1.5 hours for a full charge. When fully charged, it allows about 2 hours of continuous use.

ACRONYMS:

IK: InfinitiKloud

OS: Operating System

A User Guide for **INFINITIKLOUD DESKTOP**

1 INTRODUCTION

The IK Desktop App can help you:

- View files you have backed up from mobile or other computer devices.
- Back up or Restore your current desktop computer with any OS.
- Back up, set personal profile information, and view encrypted data from your IK storage using the app over a WiFi connection
- Transfer files to other devices over your wireless network.

Always use the built-in software on the IK storage device for backing up your files. Do not copy and run the app from your computer's hard drive—this will make the app itself a target for back up.

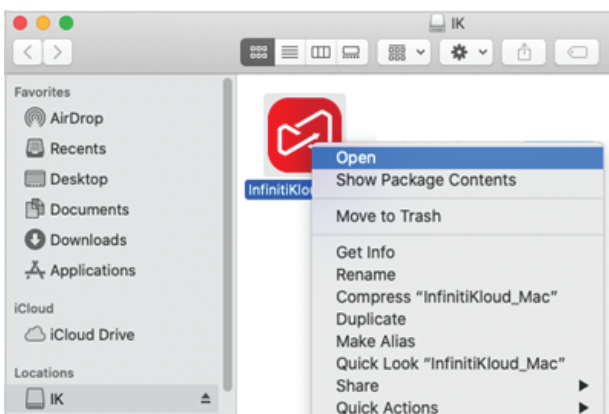
2 RUN THE IK APP

To begin using InfinitiKloud, all you need to do is plug in the InfinitiKloud to your desktop.

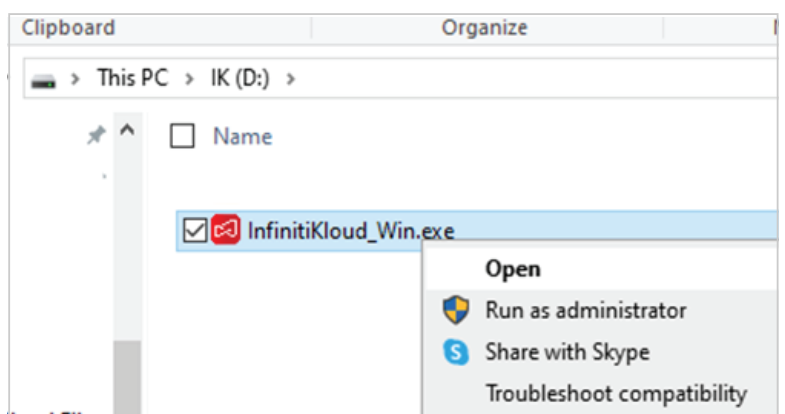
First, open the IK drive folder (using **File Explorer** for PC or **Finder** for Mac).

To start up the program, either double-click on the InfinitiKloud icon or right-click and choose **Open** from the context menu.

Wait a moment for it to fully load. Once the InfinitiKloud application launches, the sign in screen will appear.



(Running IK on Mac)



(Running IK on Windows)

3 KEEP THE APP UP TO DATE

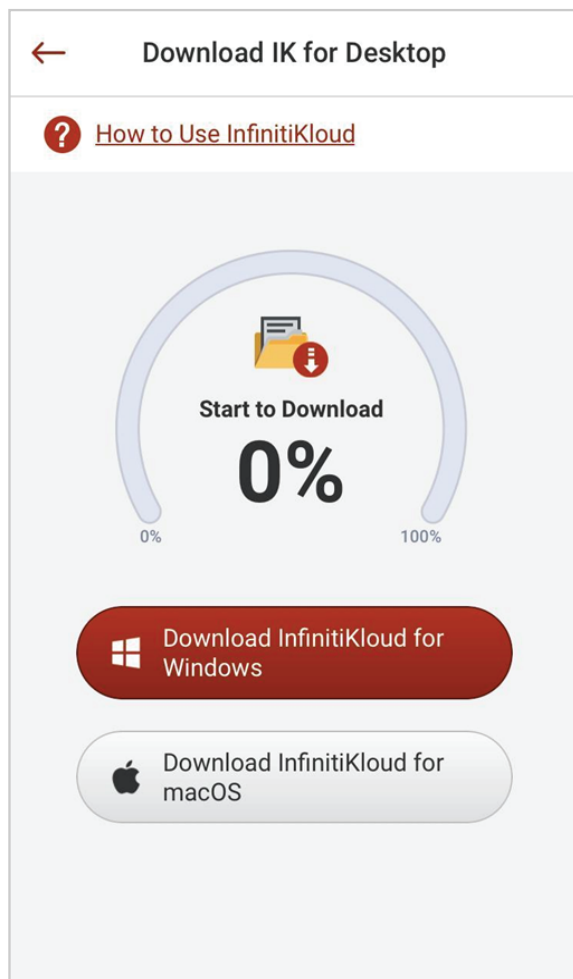
We are committed to continuously updating the application on all platforms to bring you latest features and enhancements of overall performance.

By keeping your App up to date, you can be sure you have access to all the latest features. There are a few different ways to update the App you can choose from:

DOWNLOAD THE DESKTOP APP USING YOUR PHONE

If you have a smartphone with the InfinitiKloud mobile App installed, you can download the desktop App:

1. Connect IK storage to your phone, then tap on **InfinitiKloud Storage**.
2. Select **Download InfinitiKloud** in the **dashboard** screen then select your computer OS.
3. After finishing, the app will be located at the root folder in your IK storage.



AUTO UPDATE

If enabled, the app will automatically check for new updates and notify you when they're ready. The notification will look like this:



Alternatively, you can use the IK Download page:

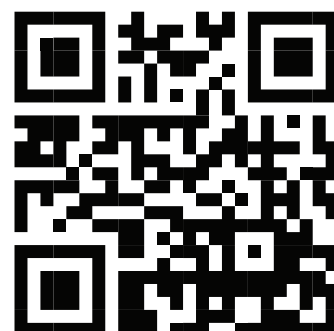
<https://www.infinitikloud.com/download-app.html>

Visit the **Download Desktop Application** section and follow the instructions.

DOWNLOAD FROM

Go to <http://www.infinitikloud.com> website and follow the instructions under the tab **Download the App**.

Or, scan the QR code beside to access the website.

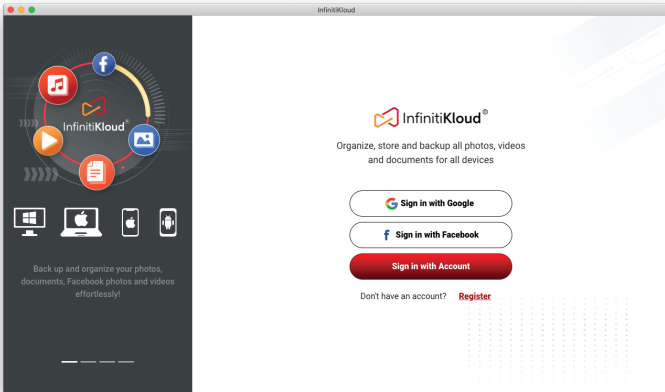


4 USER ACCOUNT

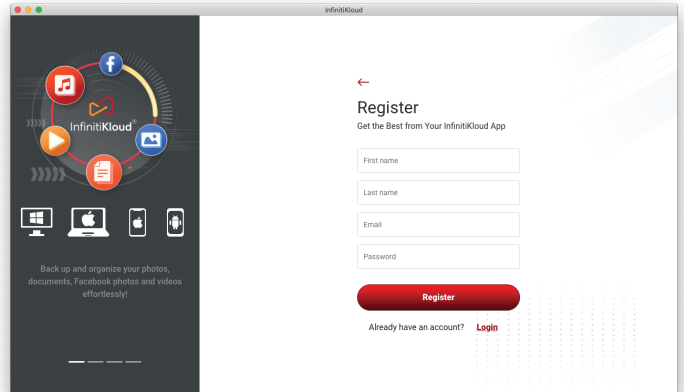
4.1 Sign In

The first step to begin using the InfinitiKloud is logging in.

In the login screen, you can use your Gmail™ account, Facebook™ account, or you can register a new account for IK.



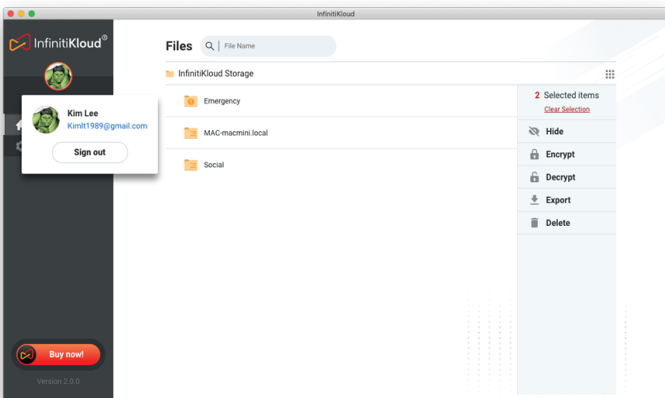
(Sign in screen)



(Registration screen)

4.2 Sign out

On any screen, choose the account icon on the top-right, then click **Sign out**.



(Sign out section)

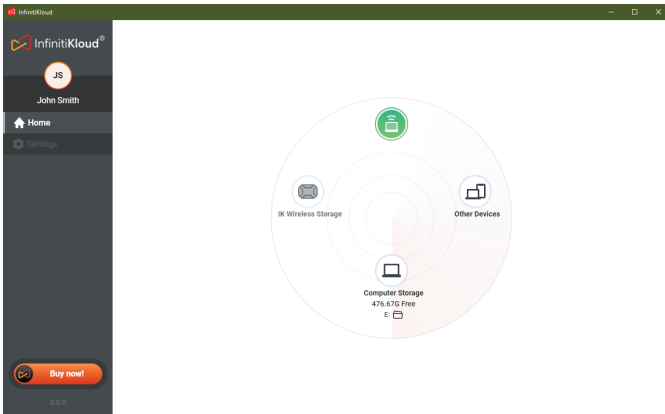
5 HOME

The Home screen shows up as default. Below that you can find the main program.

Before you Drag and Drop your desktop to Computer or IK Wireless Storage, ensure your system is prepared:

1. For Computer Storage, the default place to store your files is the flash drive. If you want to change to another place, choose the Folder icon under Computer Stage
2. For IK Wireless Storage, purchase one device and connect with it via WiFi.

- Drag and drop your computer icon to a storage location icon to **back up files**.
- Drag and drop each storage location icon to your computer to **restore files**.
- Click on **each storage location** icon to open the dashboard.



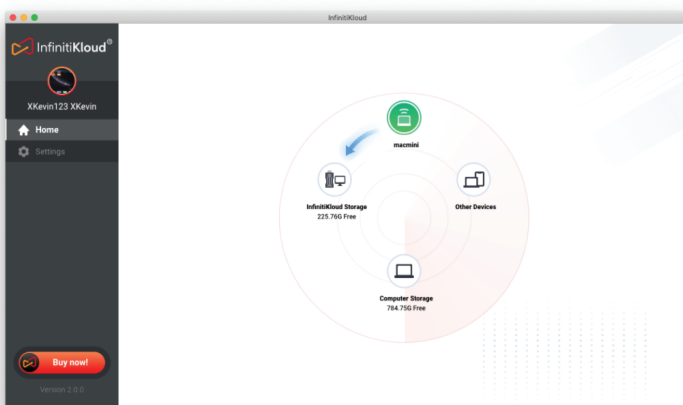
(Home screen)

5.1 Backup and Restore with InfinitiKloud Storage

Backup:

- Drag and drop your computer icon to your **InfinitiKloud storage** icon.
- You can specify extra extension files to back up by putting the extension in **Additional extensions** input field, using commas “,” to apply, such as: “txt,”. (File extensions screen)
- Choose where you want to store the back up by clicking on **Change Location** button. (Location screen)
- After your system is configured, select one of three kinds of backup:
 - **Backup Now:** the backup process runs based on your configuration settings (Folder, file extensions).
 - **Back up Facebook Pictures and Videos:** after choosing this option, input your Facebook account information and the InfinitiKloud application will back up all files from it.
 - **Back up Emergency Documents:** Store all important photos documents with the highest level of security. This will encrypt data files so that only you can view or export them. Just click on this button then upload your documents.

All data is encrypted with AES256 encryption, the strongest encryption used by the US Government and top-tech companies like Google. All data is encrypted and stored in your IK storage. In order to access these documents, you will need to log in with the same credential and use the same IK Storage account that you used to encrypt them.

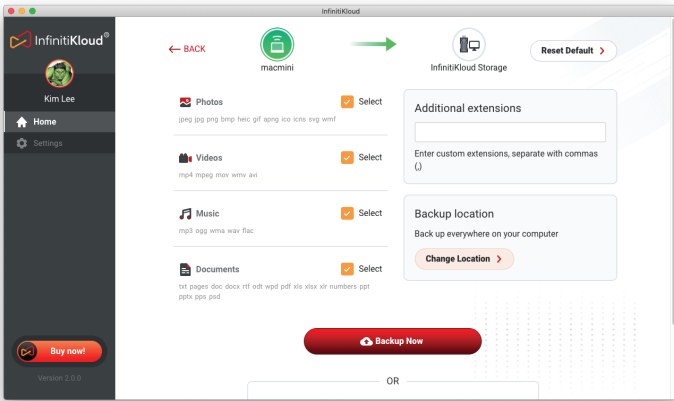


(Home screen)

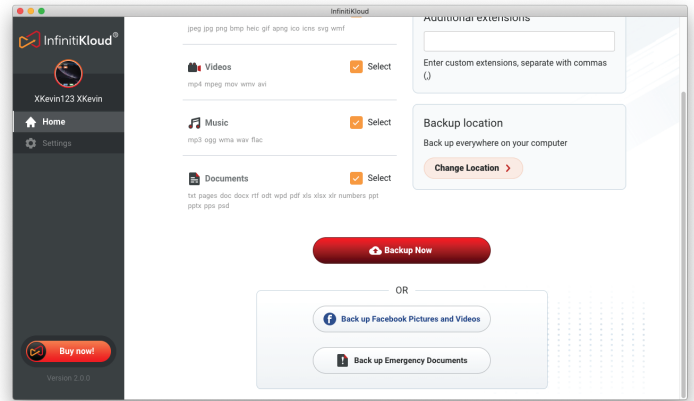
The following file extensions are automatically backed up:

- Photos/Images: jpeg, jpg, png, bmp, gif, apng, ico, icns, svg, wmf, heic
- Music: mp3, ogg, wma, wav, flac
- Videos: mp4, mpeg, mov, wmv, avi
- Documents: txt, pages, doc, docx, rtf, odt, wpd, pdf, xls, xlsx, xlr, numbers, ppt, pptx, pps, psd

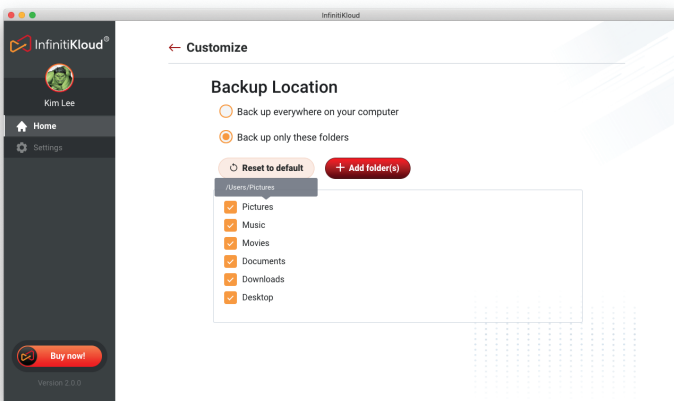
Default backup extensions can be updated on **Additional extensions**. After you've added a new extension to the default list, files with that extension will also be backed up.



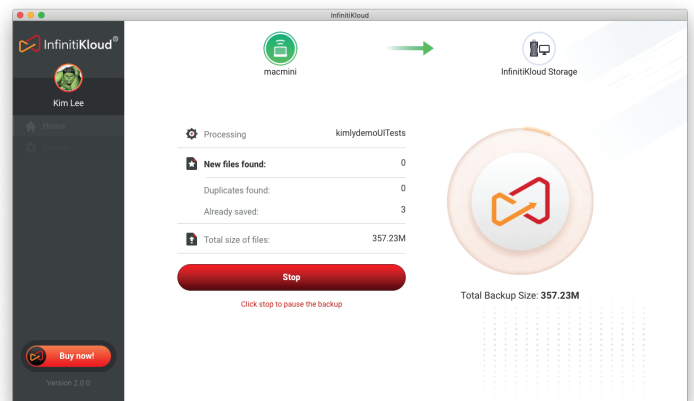
(File extensions screen)



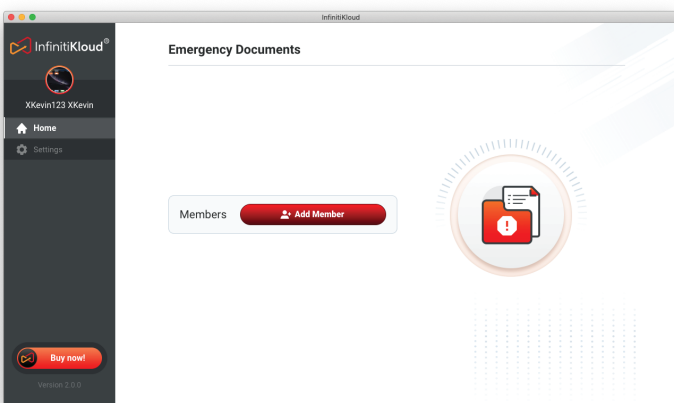
(Scroll down to see three options for backup)



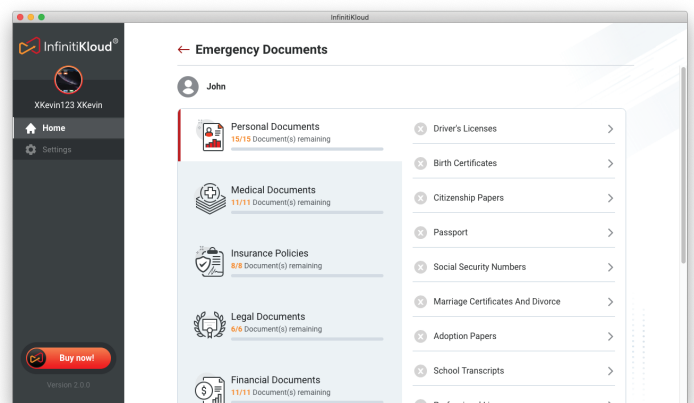
(Change Location screen)



(Select Backup Now)



(Select Back up Emergency Documents)



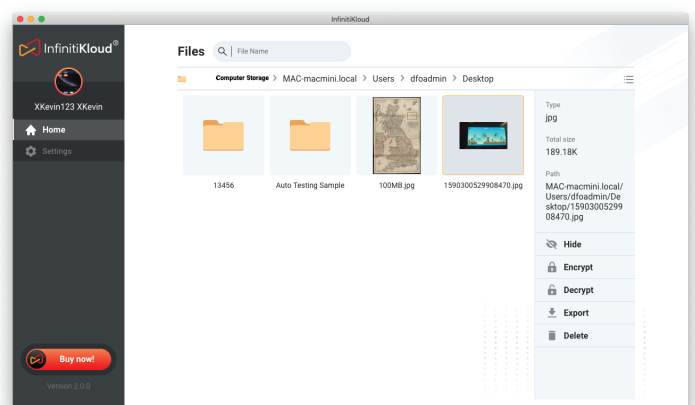
(Emergency Documents list)

Restore:

- Drag and drop the **InfintiniKloud Storage** icon to your computer.
- Go through your folder and select the files you'd like to restore.
- Choose **Export** in the right panel.
- Select a folder to send your restored files to.



(Home screen)



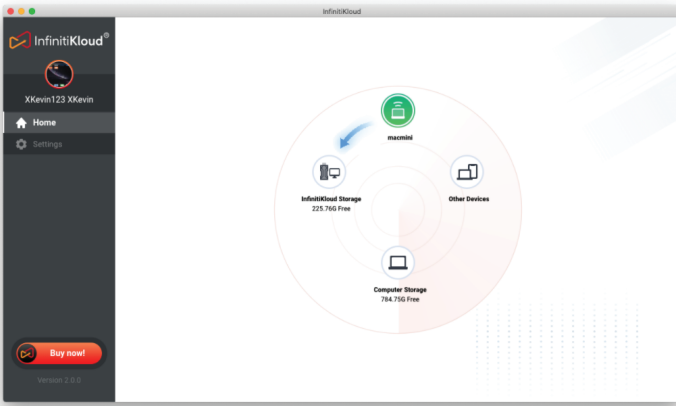
(Files management screen)

5.2 Backup and Restore over Other Devices

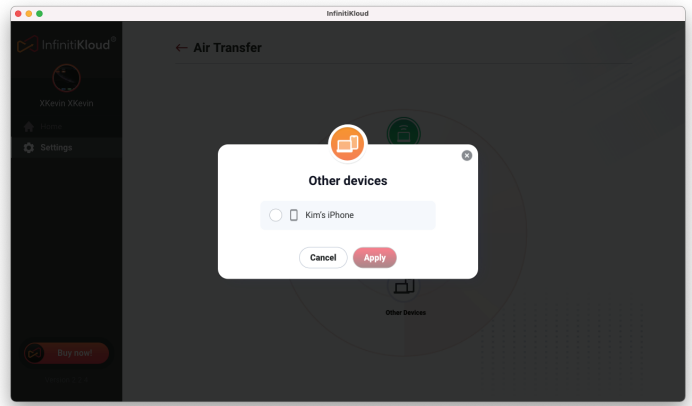
Both devices must use the InfinitiKloud application. You must sign in both devices under the same user account, and keep them both joined on the same network or Wifi when backing up.

Backup files to another device:

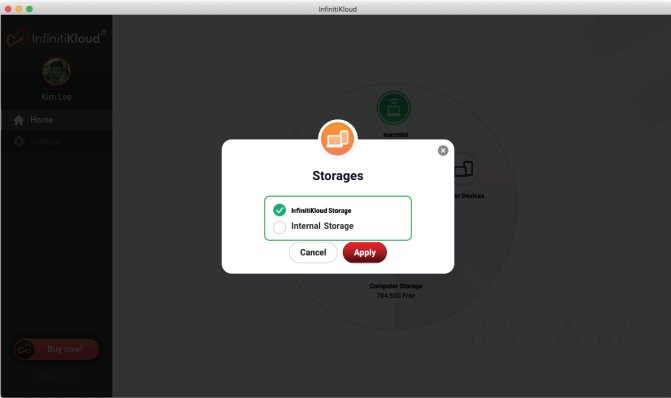
- In the Home screen, drag and drop **your computer** icon to **Other Devices** icon.
- Choose a device in the list.
- Select a storage device. (This is the place where you will store the files)
- Select file extensions and where (which folder) you would like to send the files.
- After this configuration process, select one of three kinds of backup:
 - **Backup Now:** the backup process runs based on your configuration settings (Folder, file extensions).
 - **Back up Facebook Pictures and Videos:** after choosing this option, input your Facebook account information and the InfinitiKloud application will back up all files from it.
 - **Back up Emergency Documents:** Store all important photos documents with the highest level of security. This will encrypt data files so that only you can view or export them. Just click on this button then upload your documents.
- In the receiving device (your phone or desktop): keep **Receiving** screen to turn on.



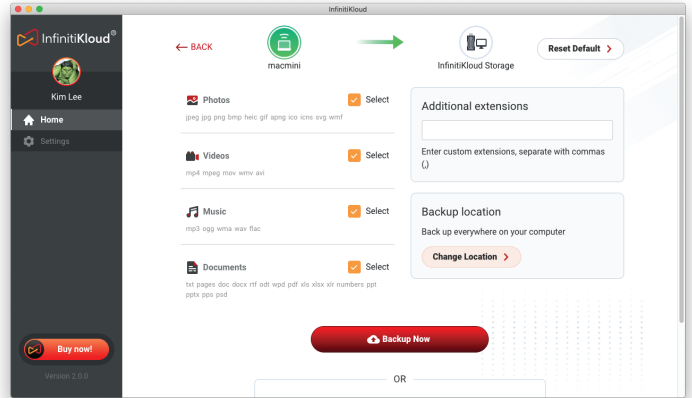
(Home screen)



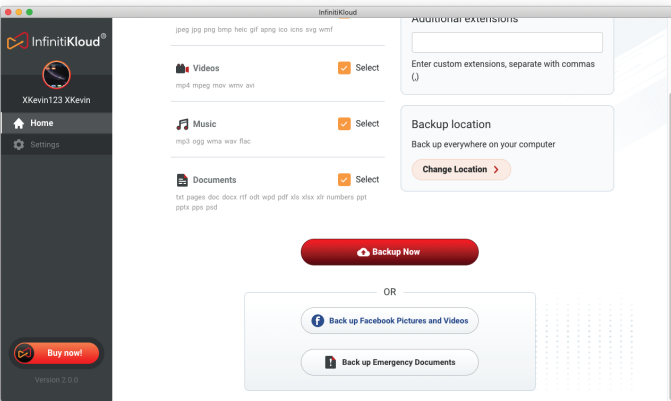
(Select a device from the list)



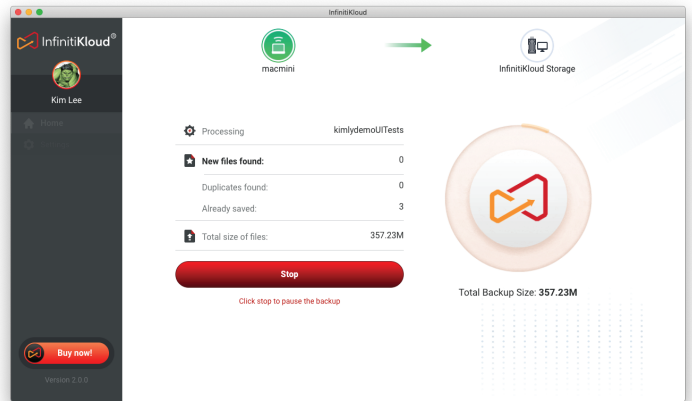
(Select a location to store data)



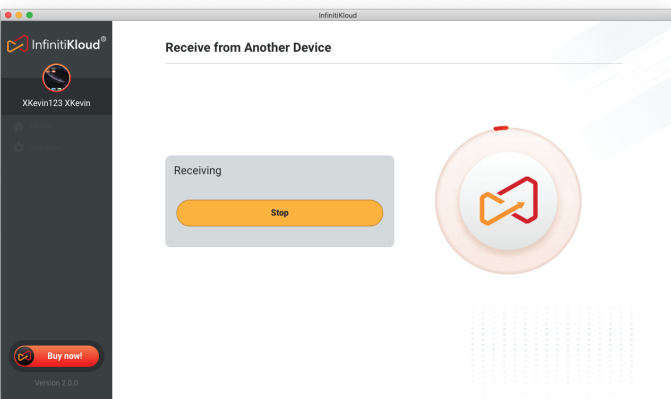
(Select your file extensions and where to send your files)



(Scroll down to see three kinds of backup)



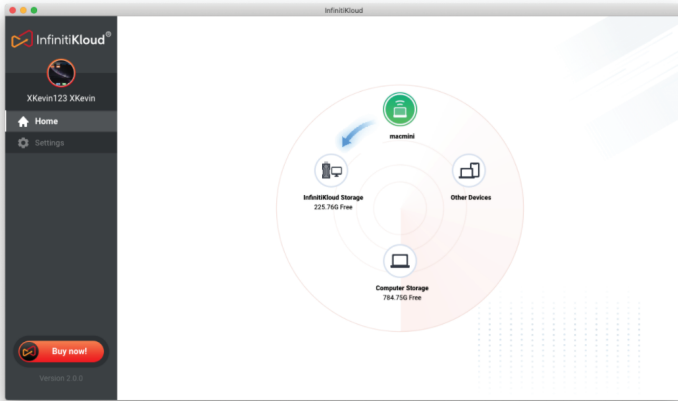
(Processing Sending Data screen)



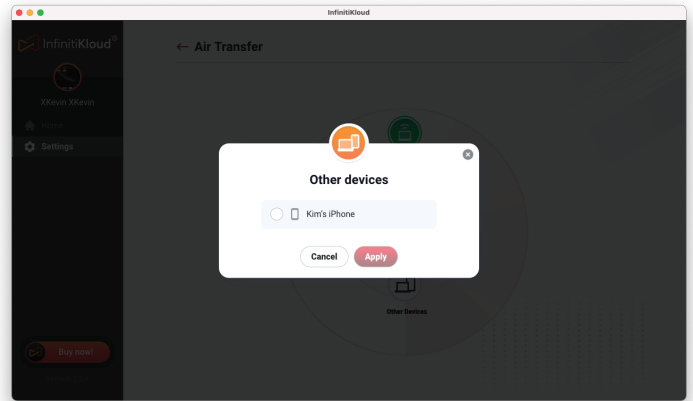
(Keep Receive From Another Device screen active)

Backup files to another device:

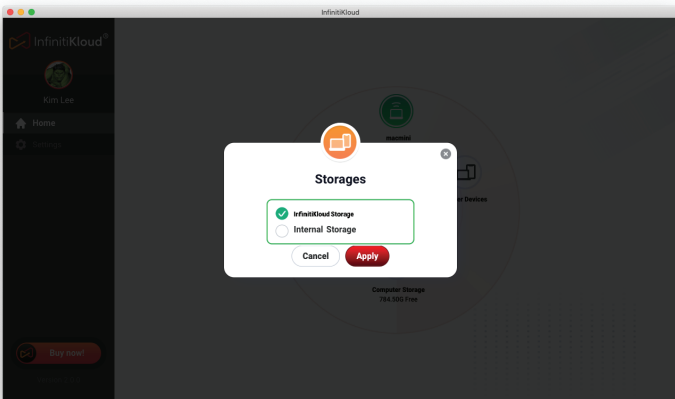
- Drag and drop **Other Devices** icon into **your computer** icon in the **Home** screen.
- Choose a device from the list.
- Select a storage device. (This is the device where you have stored your files)
- Select your files and choose **Export**.
- Choose the new folder where you'd like to store your files.



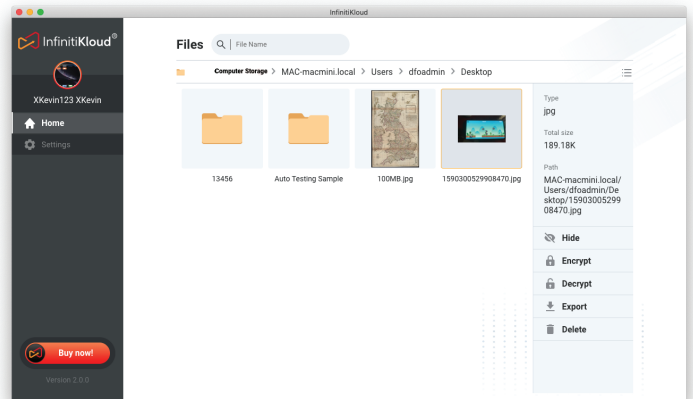
(Home screen)



(Select a device from the list)



(Select a storage device to retrieve data from)



(Choose Export in Files screen)

5.3 Backup and Restore with Computer Storage

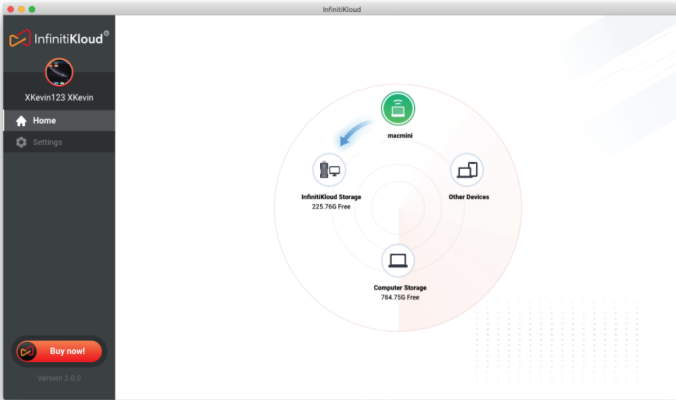
All data is stored inside your computer's desktop as:

- Windows: C:\Users\[ComputerName]\AppData\Roaming\InfinitiKloud
- Mac: Macintosh HD > Users > [MacName] > Library > Application Support > InfinitiKloud

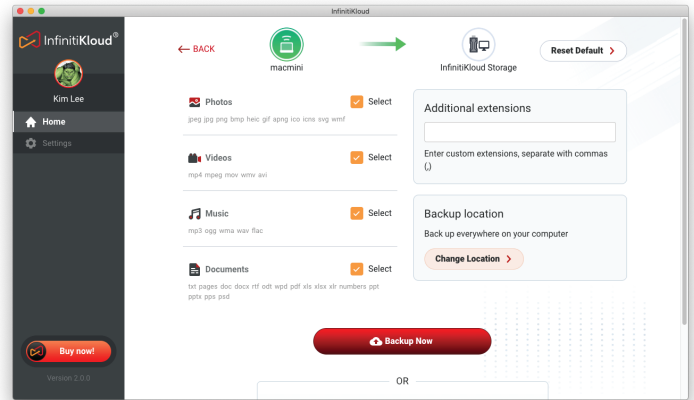
Backup to Computer Storage:

- Drag and drop your computer icon onto the **InfinitiKloud storage** icon.
- You can specify extra extension files to back up by adding them in the **Additional extensions** input field, using commas “,” to apply, such as: “txt.” (File extensions screen)
- Choose where you want to store your backup by click on **Change Location** button. (Location screen)
- After this configuration process, select one of three kinds of backup:

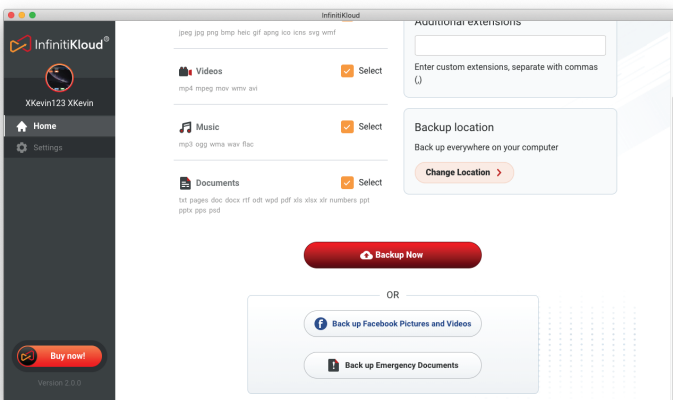
- **Backup Now:** the backup process runs based on your configuration settings (Folder, file extensions).
- **Back up Facebook Pictures and Videos:** after choosing this option, input your Facebook account information and the InfinitiKloud application will back up all files from it.
- **Back up Emergency Documents:** Store all important photos documents with the highest level security. This will encrypt data files so that only you can view or export them. Just click on this button then upload your documents.



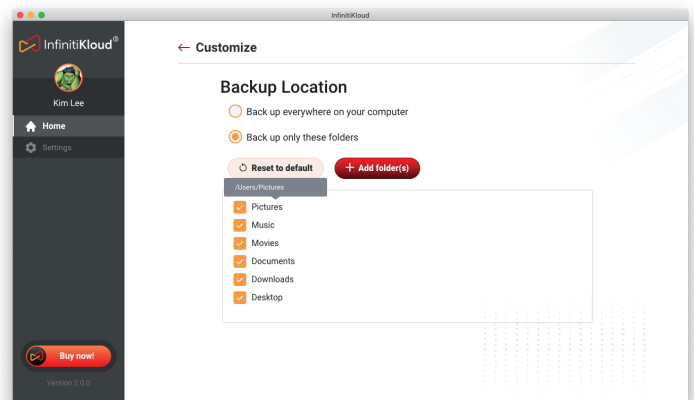
(Home screen)



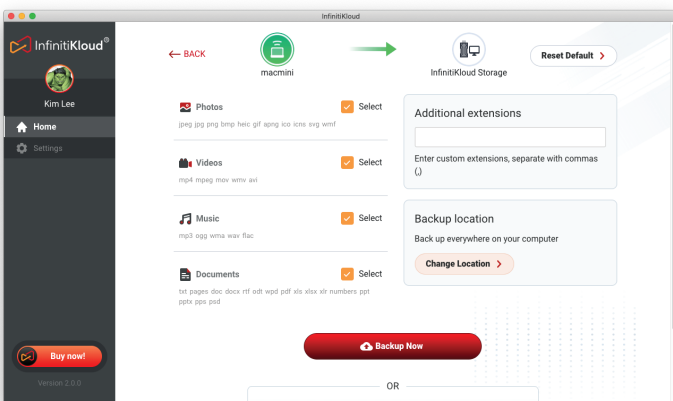
(File Extensions screen)



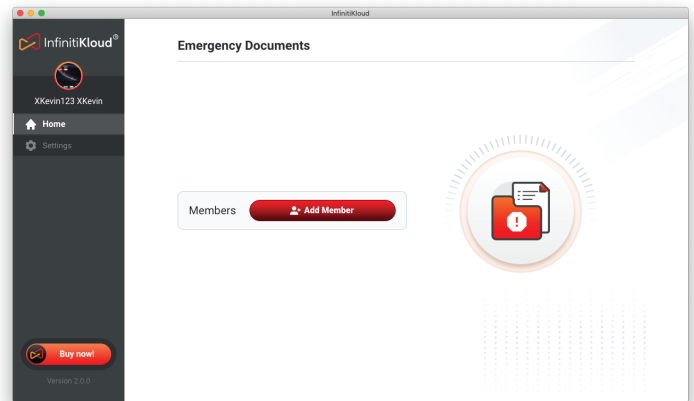
(Scroll down to see three kinds of backup)



(Scroll down to see three kinds of backup)



(Select Backup Now)



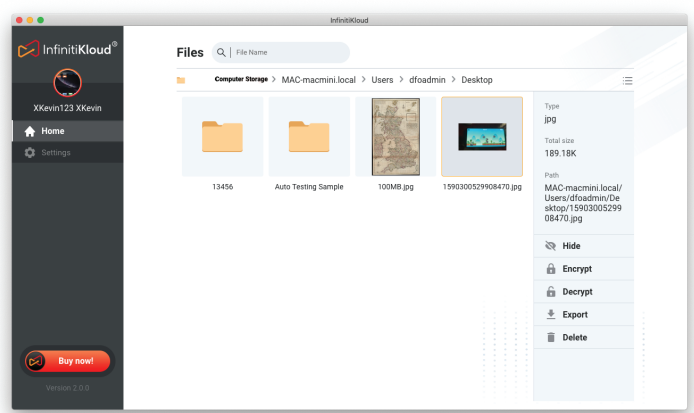
(Select Back up Emergency Documents)

To Restore from Computer Storage:

- Drag and drop the **Computer Storage** icon to your computer.
- Go through your folder and select your files.
- Choose **Export** in the right panel.
- Select which folder you'd like to store the files in.



(Home screen)



(Files management screen)

**Difficulties with setting up your device?
We are here to help!**

Thank you for purchasing InfinitiKloud Wireless
For inquiries, please visit:

<https://support.infinitikloud.com>

or scan the QR code below

Our customer support team is happy to help!



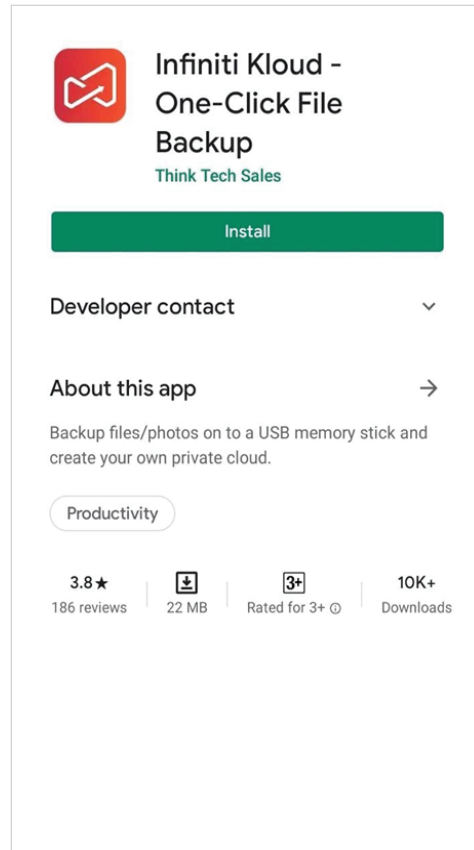
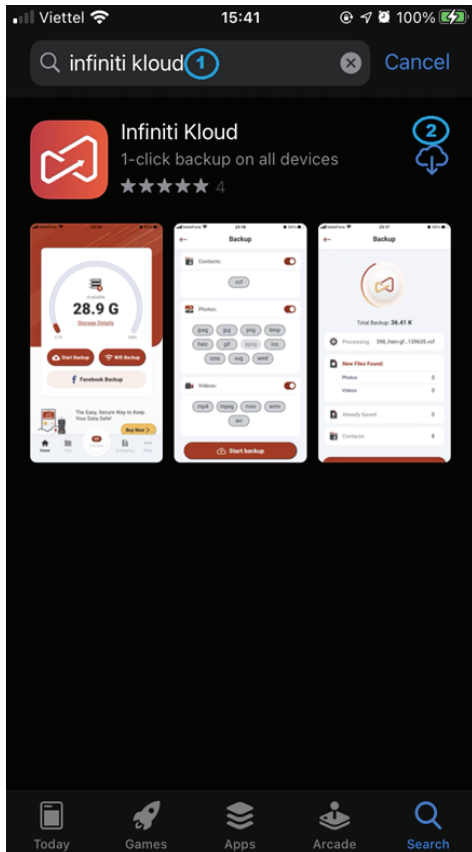
Support

User Guide for **INFINITIKLOUD MOBILE**

1 INSTALL INFINITIKLOUD

1.1 Mobile devices

Go to the App Store® (iOS™ device) or Google Play store™ (Android™ device), search for **Infiniti Kloud** and install the app.



(Search and Install Infiniti Kloud on App Store® and Google Play™)

1.2 PC and Mac device

The InfinitiKloud app is pre-installed in your InfinitiKloud storage.

However, the stocked version of the app might be outdated.

You can always be sure you have the most recent version by downloading the app from our website.

www.infinitikloud.com

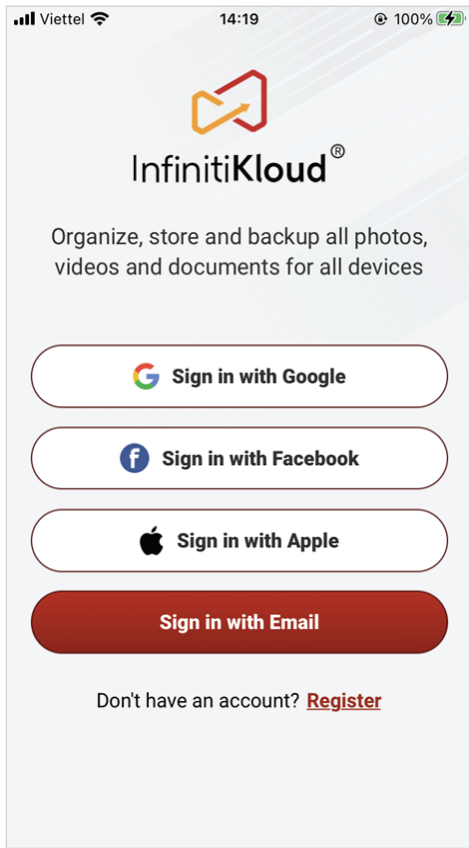
Go to Download App page and select to download the app to run on your device.

2 LOGIN – REGISTER

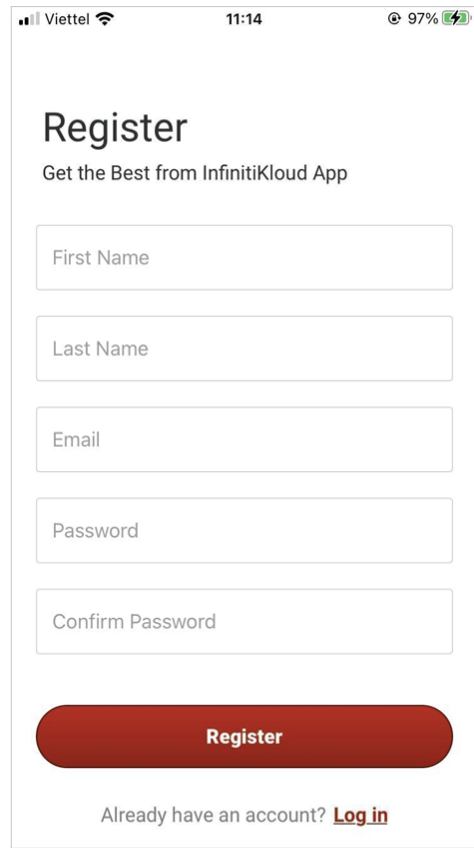
Once you've created an account, you can log in using your registered email address and password, or use your existing **Google™**, **Facebook™** or **AppleID®** (available on iOS devices).

Note:

If you forgot the password, you can choose **Forgot Password** under the password field. Input your email account and the reset password link will be sent to you.



(Sign in options list screen)

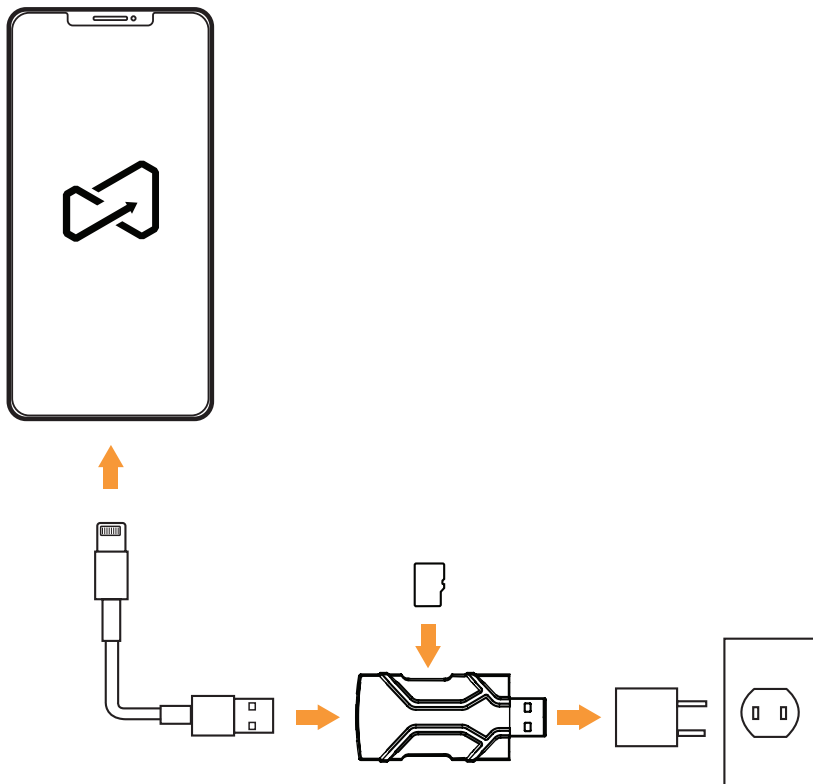


(Sign up using a specific email and password)

3 CONNECT DEVICES TO YOUR PHONE

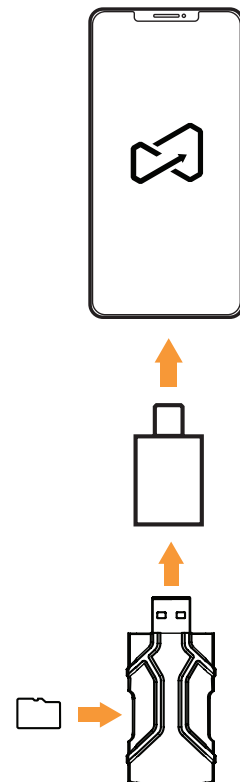
3.1 InfinitiKloud Charge

Note: Make sure to plug the TF Card into the InfinitiKloud Charge

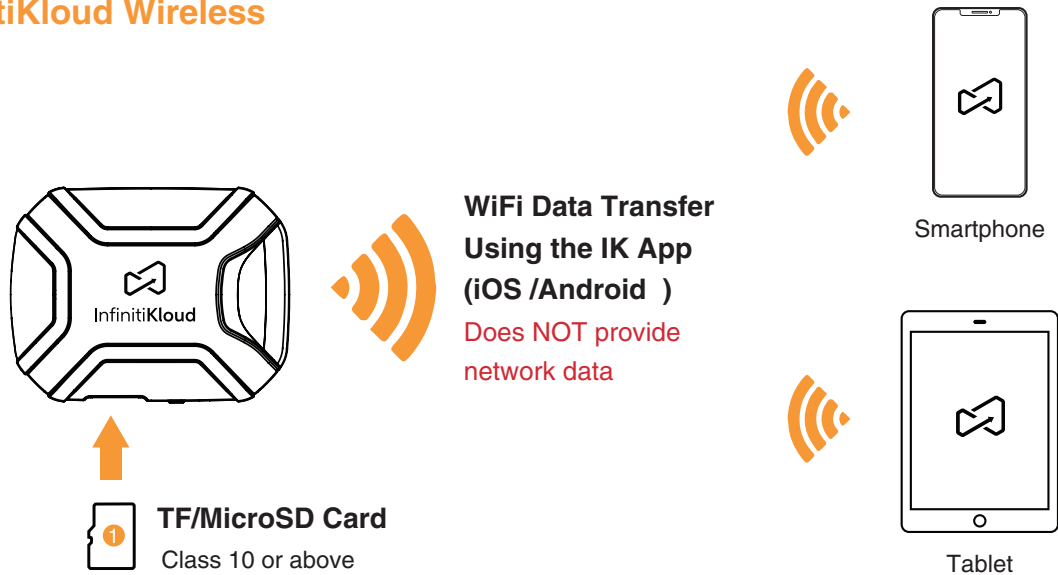


3.2 InfinitiKloud SD or Charge

Note: Make sure to plug the TF Card into the InfinitiKloud SD



3.3 InfinitiKloud Wireless



Note: Connect InfinitiKloud Wireless to external WiFi to use full features

1. Charge the InfinitiKloud Wireless battery for at least 30 minutes before using.
2. Open the InfinitiKloud application and **Sign in/Log in** using your internet connection.
3. Insert the MicroSD Card into your InfinitiKloud Wireless.
4. Turn on the InfinitiKloud Wireless (Press and hold the power button for 3 seconds).
5. Open your **WiFi settings** on your smartphone or tablet to connect with InfinitiKloud Wireless.
6. Wait for the system to prompt you on when to connect your devices.
7. Open the InfinitiKloud application again.
8. When InfinitiKloud Wireless icon is visible (and it is no longer blurred out), tap on it.
9. Choose the **Wireless icon** in the header of the screen.
10. In **Wireless Settings**, tap on the **Configure External WiFi** button and select your current network WiFi connection.
11. Input your password and tap **Save**.
12. Wait a moment and then reconnect your phone with your InfinitiKloud Wireless device.
13. All functions should be able to be used normally now.

4 DEVICE MANAGEMENT

After login successfully, you will be brought to the Device Management screen. This is the primary screen where you can decide what to do with your IK storage.

4.1 Storage Listing

- The icon of your phone is shown on top.
- Other storage locations are listed around your phone
 - Available storage locations are interactive and display remaining capacity.
 - Unavailable storage locations are greyed out.
 - Each grey storage location has a instructions telling you how to use it.

4.2 Setup Connection

- Please allow all requested permissions when opening the InfinitiKloud app and using it with your phone.
- For Internal Storage: Allow the app to access your phone storage.
- For InfinitiKloud Storage: Refer to **InfinitiKloud SD or Charge** in **Connect Devices to Your Phone** images.

- For InfinitiKloud Wireless:
 - Refer to **InfinitiKloud Wireless in Connect Devices to Your Phone.**
- For Other Devices:
 - 1. Repair 2 phones (Android or iOS)
 - 2. Upgrade latest version app for 2 phones.
 - 3. Connect to the same Wi-Fi network.
 - 4. Plug the InfinitiKloud flash drive into one phone.
 - 5. Launch app and Login with the same account email in 2 phones.

4.3 Available Actions

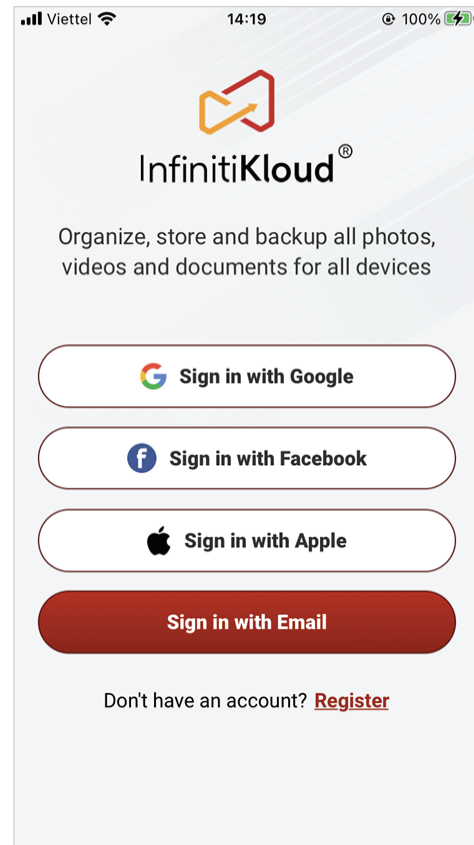
- Back up: Drag the phone icon and drop it on the storage location you want to use. You can also double tap a storage location for the same action.
- Restore: Drag a storage location you want to retrieve files from and drop it onto your phone.
- View InfinitiKloud storage report: Single Tap on a storage location. If the storage location is not available, you will see instructions on how to connect with it.

4.4 Manage Files Functions

- Tap on each storage location icon in your Home screen.
- Go inside each folder.
- Tap and hold to select single and multiple items.
- Choose the Setting icon to open the menu functions.

Storage Locations List:

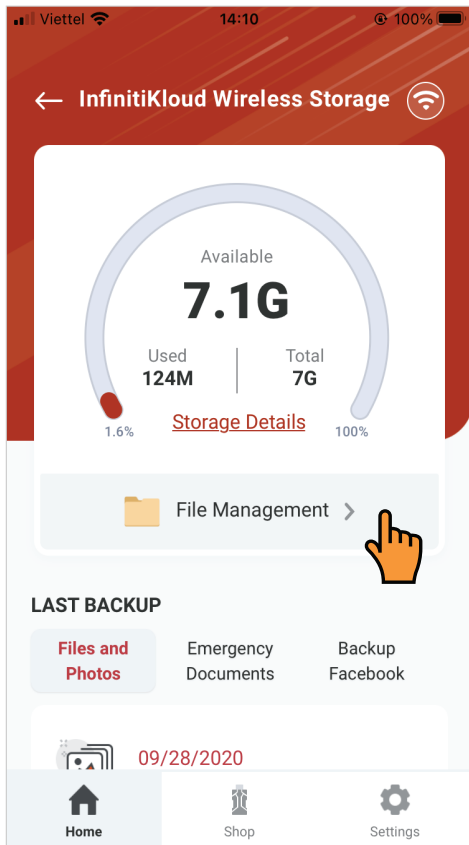
- 1 InfinitiKloud Storage:**
Use the InfinitiKloud Flash Drive plugged into your phone.
- 2 Other Devices:**
Use the InfinitiKloud Flash Drive to transfer data between two phones over a Wi-Fi connection.
- 3 Internal Storage:**
Use your phone's internal storage.
- 4 InfinitiKloud Wireless Storage:**
Use the stand-alone Wireless storage made by the InfinitiKloud team.



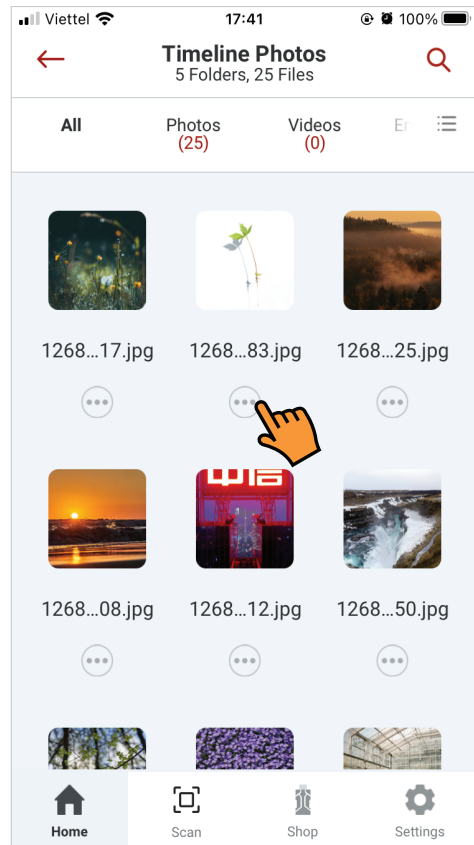
(Kumo instruction screen)




(Home screen)



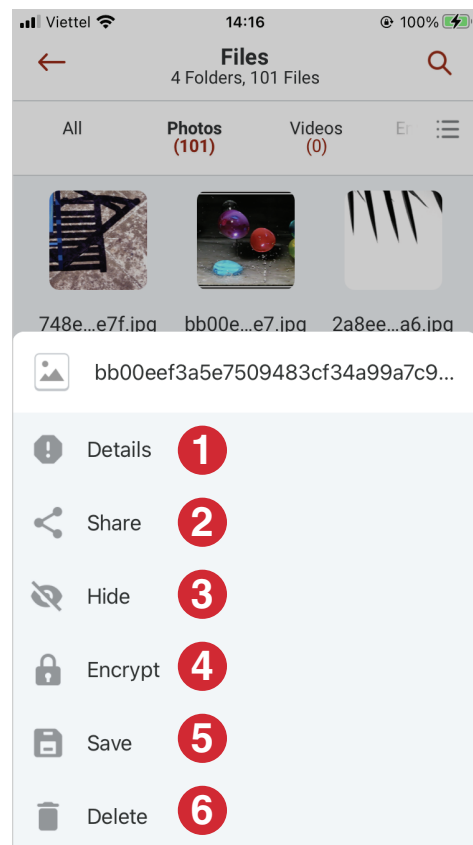
(Dashboard screen)



(Go through your files and Select  icon to open the functions list)

Functions List:

- 1 **Details:** View the selected item.
- 2 **Share:** Share a file with another application.
- 3 **Hide:** Move the selected item to a hidden folder.
- 4 **Encrypt/Decrypt:** Secure the selected item to use only with one current login.
Note: You must use the same account to decrypt your file after encrypting it. Only the InfinitiKloud app can read and decrypt this file.
- 5 **Save:** Restore the item to your phone. (**All Photos** in iOS, **Download/InfinitiKloud** folder in Android)
- 6 **Delete:** Delete the selected item.



(Menu functions list in Files management screen)

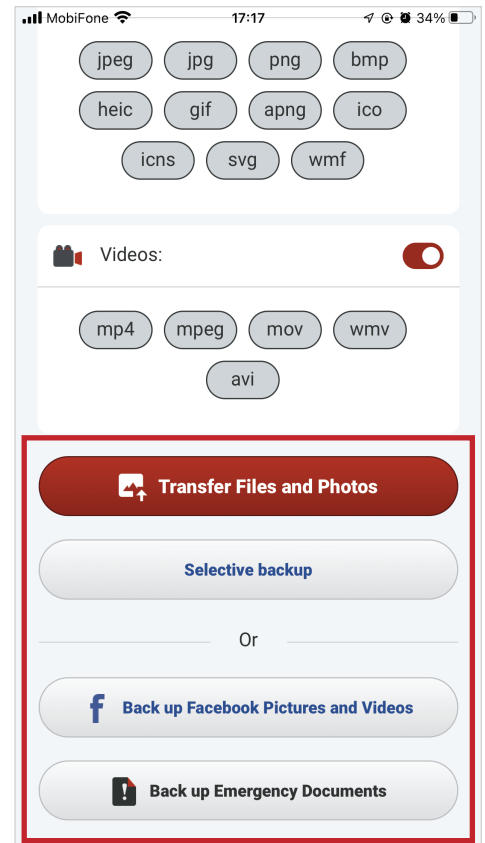
4.5 Supported Backup Places

In each storage location, the InfinitiKloud application provides three options that you can choose to secure your files.

- **Back up Files and Photos:** transfer data from your phone to your storage location.
- **Back up Facebook Pictures and Videos:** transfer pictures and videos from your Facebook account to your storage location.
- **Back up Emergency documents:** identify your critical documents and back them up in your storage location.

Note: The app capacity will increase because your data is stored inside it.

(Choose your storage location in the select extensions screen)

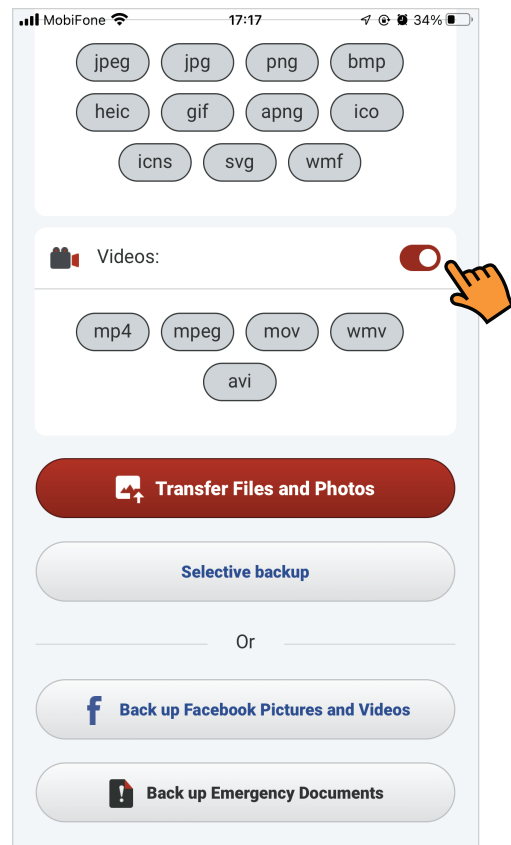


4.6 Back Up

A. To an Internal Storage Location



(Drag Your Phone to Internal Storage icon)



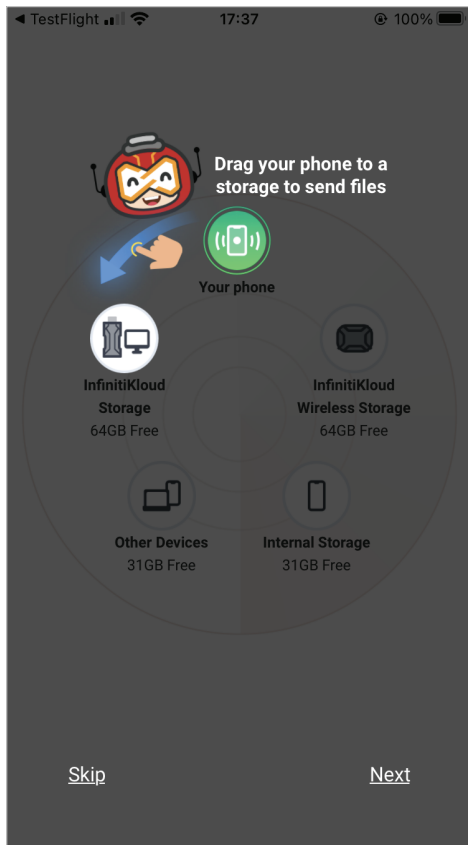
(Select the extension file types)

Note: Allow App to access your phone contacts to back them up.

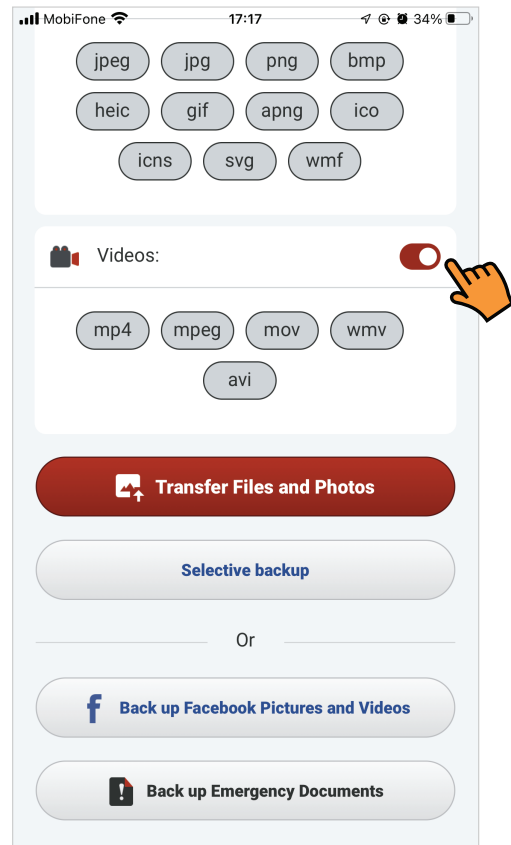
B. To InfinitiKloud Storage

- Drag your phone to InfinitiKloud Storage icon
- Select extension file types and choose where you want to back up.
(This step will be the same with **InfinitiKloud Internal Storage**.)
- Choose where you want to back up.

Note: Make sure you plugged **InfinitiKloud flash drive** into your phone. All data will be stored in it after backed up.



(Drag Your Phone to InfinitiKloud Storage icon)



(Select the extension file types)

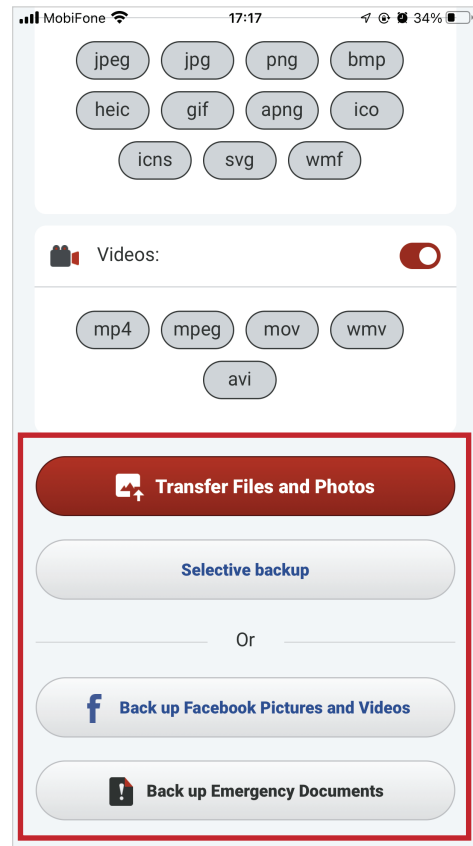
C. To InfinitiKloud Wireless Storage

- Drag your phone icon to InfinitiKloud Wireless Storage.
- Select the type of file extensions you wish to back up.

Note: Login to see **Home** screen before connecting the phone with **InfinitiKloud Wireless device**. Make sure you are already connected to the **InfinitiKloud Wireless device** by Wi-Fi and wait a few moments for the app to identify it.



(Drag Your Phone to IK Wireless icon)



(Choose which files to backup)

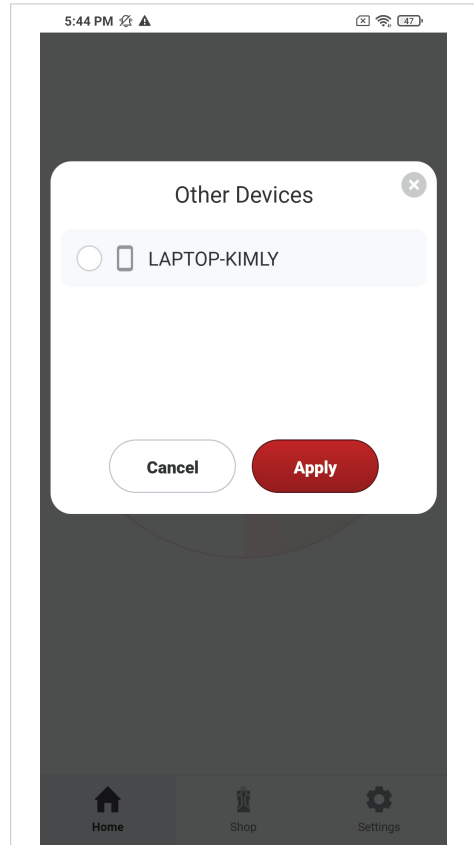
D. To Other Devices

- Prepare two phones with **the same account login information** and **on same Wi-Fi** network.
(The destination phone should be plugged in InfinitiKloud storage)
- Drag your phone to the **Other Devices** icon.
- Select the phone that is the destination you wish to send your files to from the list.
- Select what you want to backup such as: photo/videos in Facebook, Emergency Documents, photos in your phone.

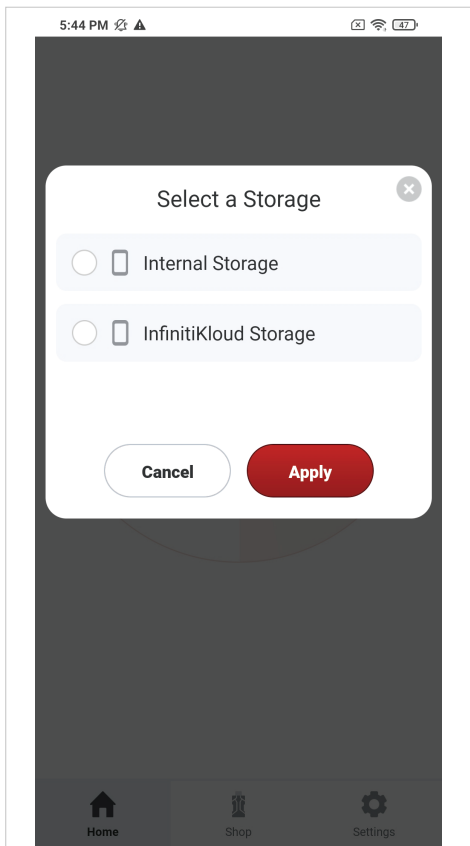
Note: Keep the destination phone's receiving screen turned on while transferring data. Do not let the phone go into sleep mode



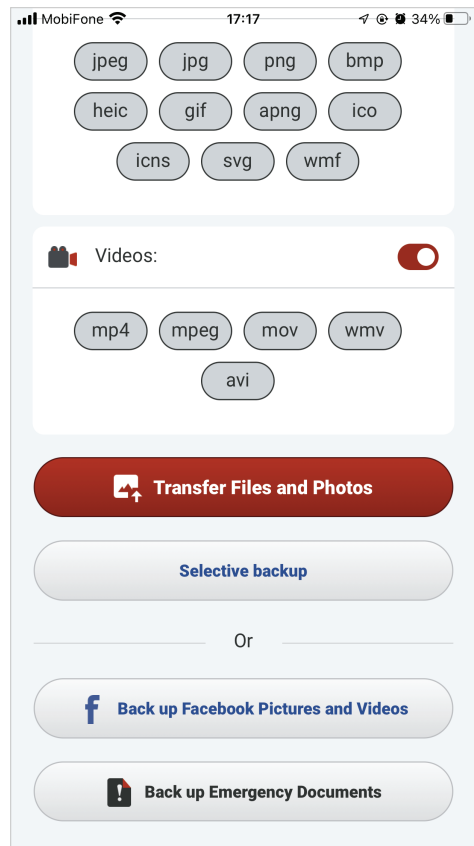
(Drag Your Phone to Other Devices icon)



(List of phones screen)



(Choose your storage location)



(Select the file extensions you wish to backup)

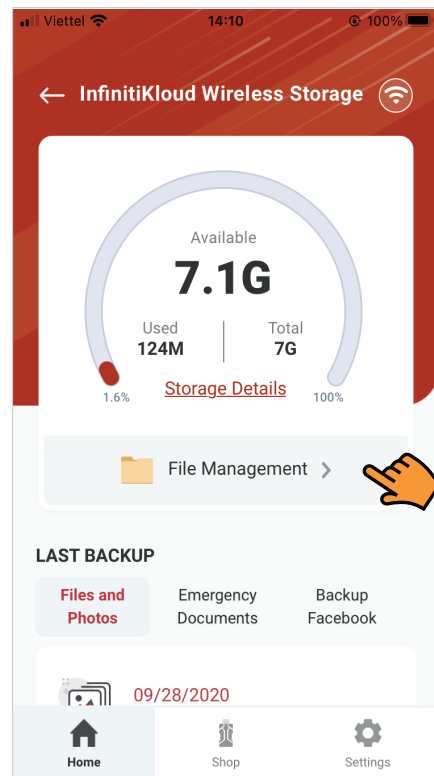
4.7 Restore Files

A. From Internal Storage

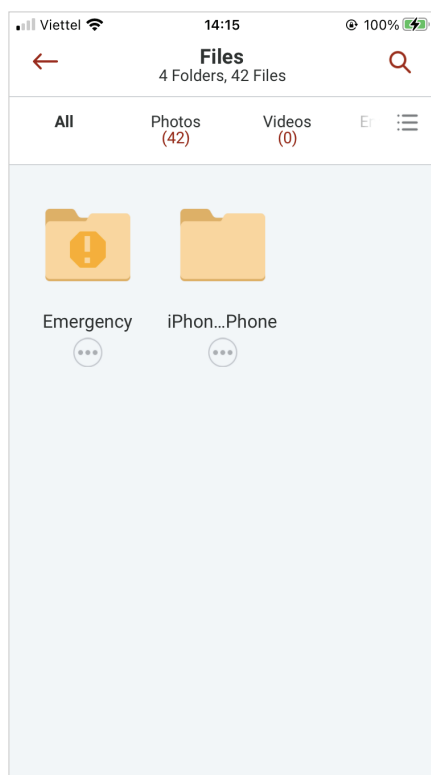
- On the **Home** screen, double tap on the Internal Storage icon.
Select **File Management** and follow the same steps as **Restore Files** in the **InfinitiKloud Storage** section.
- Open your Folder.
- Tap and hold to select multiple items
- Choose **Save** to restore files back to your phone.



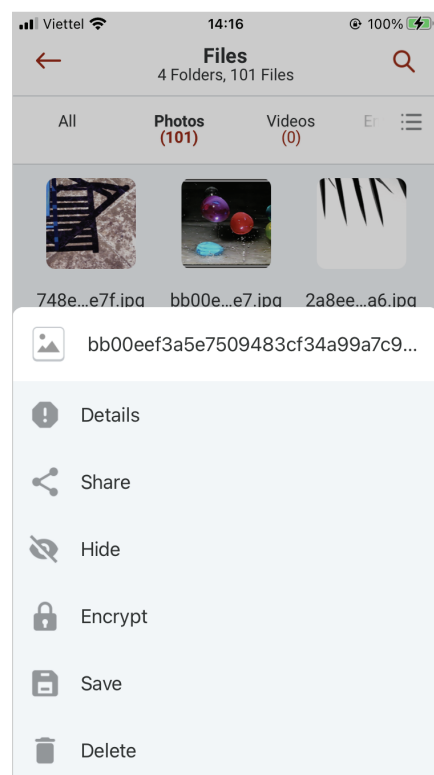
(Tap on Internal Storage in Home screen)



(Select File Management in dashboard screen)



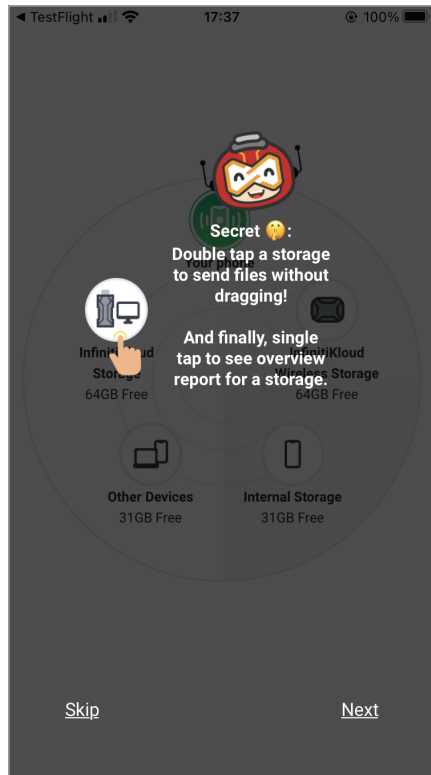
(File Management screen)



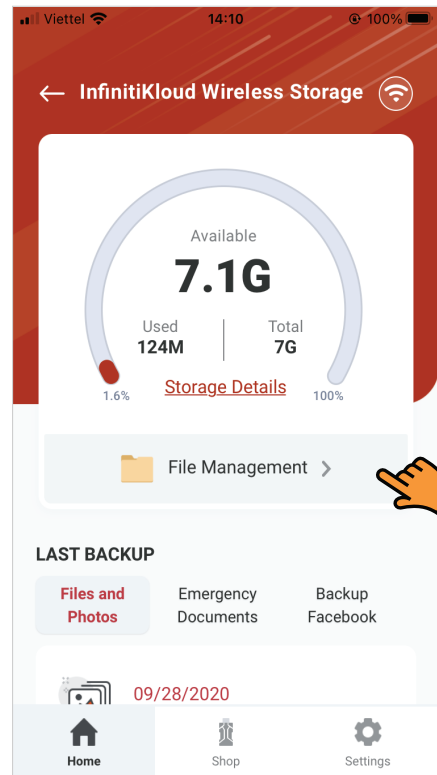
(Menu functions in File Management screen)

B. From InfinitiCloud Storage

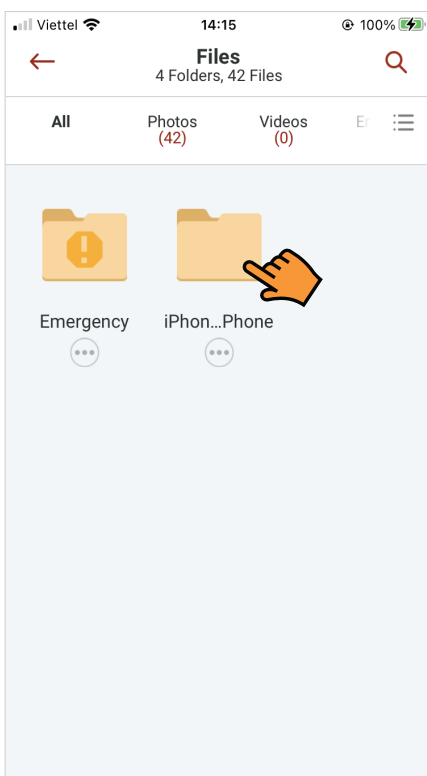
- Tap on the **InfinitiCloud Storage** icon (or Drag the **Storage** icon to the **Phone**).
Select the **File Management** field.
- Open your Folder.
- Select **⋮** to open the functions list.
- Choose **Save** to restore files back to your phone.



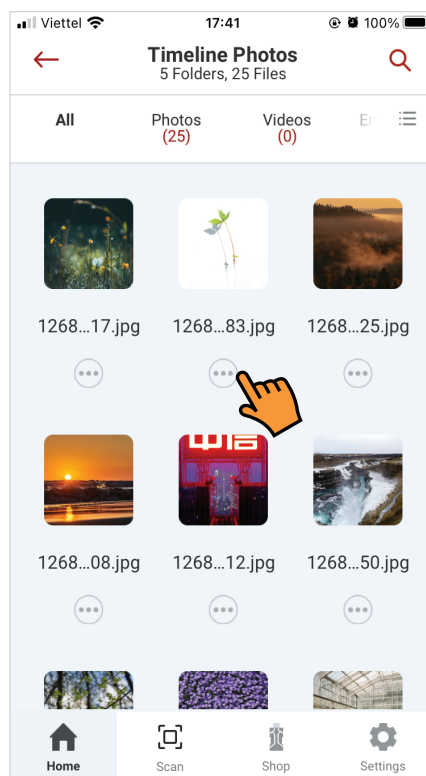
(Home screen)



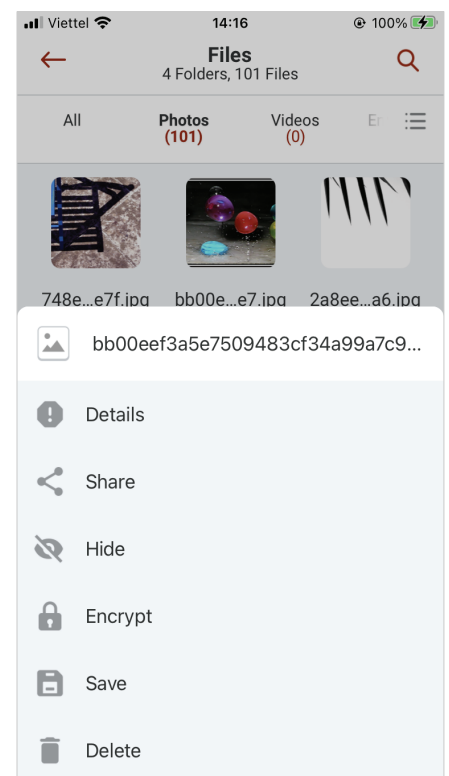
(Select File Management in dashboard screen)



(File Management screen)



(Settings icon in File Management screen)



(Menu functions in File Management screen)

Restored files location:

- iOS: Restored files appear in your **Photos**.
- Android: Restored files appear in your **Phone Internal Storage > Download**

C. From InfinitiKloud Wireless Storage

- Tap on the IK Wireless Storage icon.
- Follow the same process as used to **Restore Files from InfintiKloud Storage**.

Note: Make sure your phone is still connected to your **InfinitiKloud Wireless device**.



(Tap on IK Wireless Storage in Home screen)

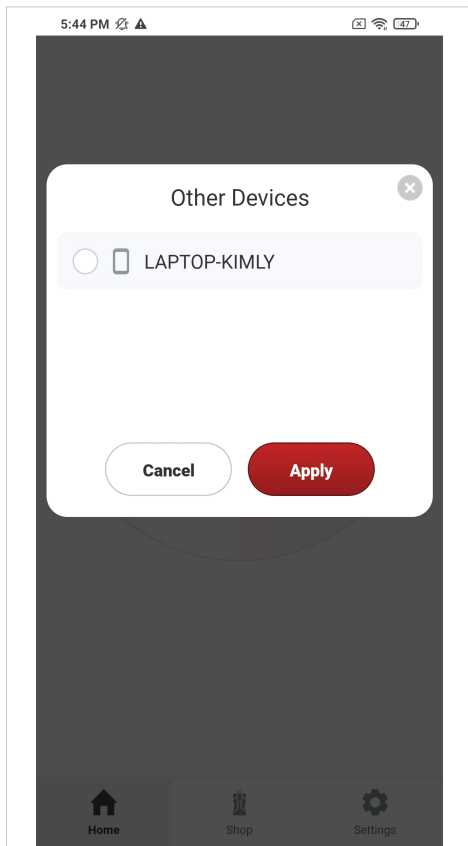
D. From Other Devices

- Prepare 2 phones with **the same account login information on the same Wi-Fi network**. (Destination phone should be plugged in InfinitiKloud storage)
- Drag the **Other Devices** icon to **your phone**.
- Choose which storage location you want to receive your files from.
- Select the folders and files you wish to restore back to your phone.

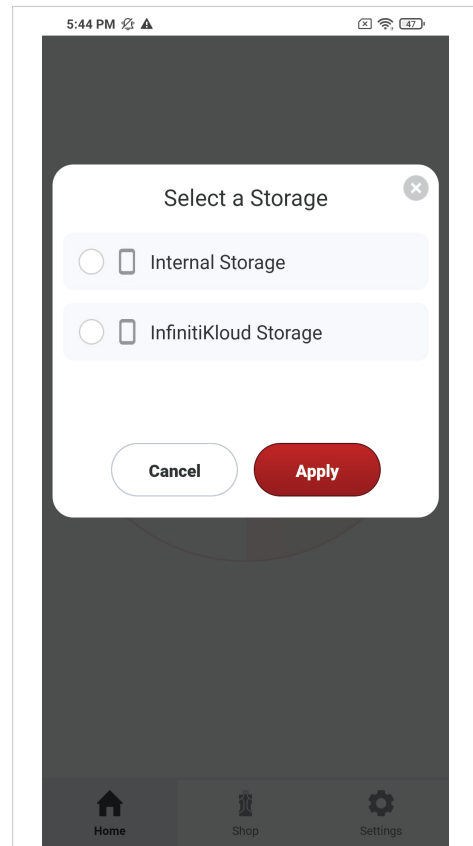
Note: Make sure the phone receiving the files does not go into sleep mode



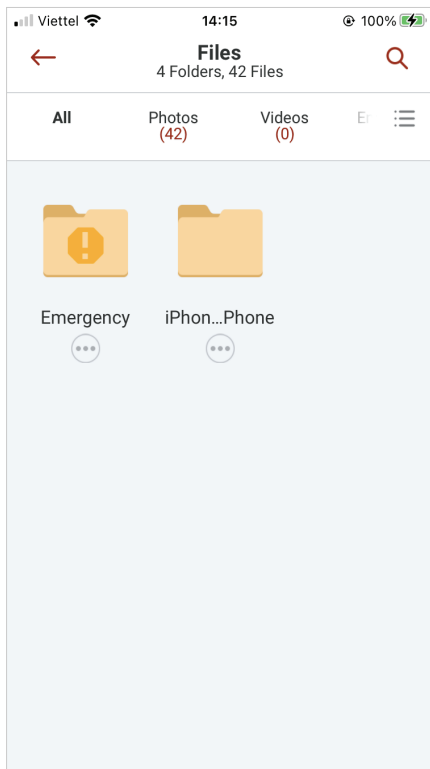
(Drag and drop in Home screen)



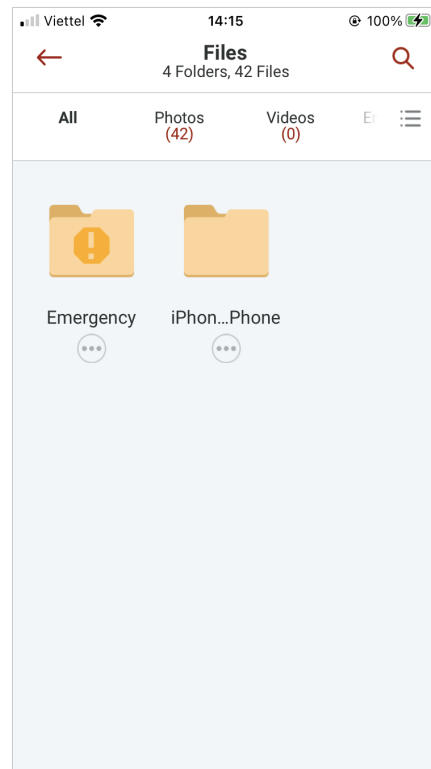
(Listing of connected phones screen)



(List of phone storages where will store data)



(Folders in Files management screen)



(Folders in Files management screen)